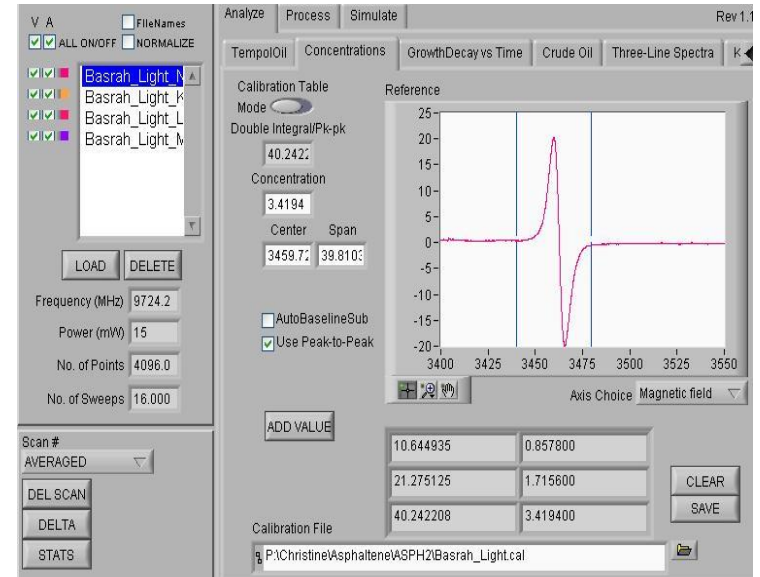


Automated Concentration Measurements

Calibration Mode

Concentration Mode

- A. Mode: Toggle between Calibrations and Concentration measurements
- B. Displays double integral value or peak to peak amplitude
- C. In Calibration mode, enter the concentration; in Concentration mode, the sample concentration is displayed
- D. Displays the center and span determined by the cursors. Values can be set by the cursors, or typed directly into the box.
- E. Check box to use peak to peak amplitude rather than double integral values.



Above: Analysis software with values entered for the calibration table, and the calibration table loaded.